

## Düşük Hızlı Yüksek Torklu Hidrolik Motorlar, W11 ve W61 Serileri

### Low Speed High Torque Hydraulic Motors, W11-W61 Series



#### W11 - W61 Serisi Orbit Hidrolik Motorlar / W11-W61 Series Orbit Hydraulic Motor

Oil Distributor	Series	Displacement cc/r [in <sup>3</sup> /r]	Max. Pressure MPa [PSI]	Speed Rpm	Max. Torque Nm [lbf-in]
Spool Valve	W11	50-400 [3.1-24.4]	14 [2030]	145-858	521 [4611]
	W21	50-500 [3.1-30.5]	17 [2465]	110-863	500 [4425]
	W31	100-400 [6.1-24.4]	16 [2320]	121-540	660 [5841]
	W41	245-800 [15.0-48.8]	15 [2175]	106-390	1380 [12214]
Disc Valve	W51	80-500 [4.9-30.5]	28 [4060]	142-856	860 [7612]
	W61	195-985 [11.9-60.1]	31 [4495]	155-865	1877 [16613]

#### Model Correspondance to Other Brands

WINMAN	Sauer Danfoss	Eaton Charlynn	Parker	M+S	SAM
W11	OMP	H Series	OMP	MP / MLHP	BG, BH
W21	OMR	S Series	TC; TB; TE; TH	MR / MLHR	BR, BS, AR
W31	OMH	--	--	--	--
W41	--	--	TF; TL; TG	MH / MLHH	--
W51	OMS	2000 Series	OMS	MS / MLHS	HR
W61	OMT;OMV	6000 Series	OMT	MT / MLHT; MV / MLHV	HT

## Düşük Hızlı Yüksek Torklu Hidrolik Motorlar, W41 Serisi

### Low Speed High Torque Hydraulic Motor, W41 Series

#### Performans Bilgileri

#### Performance Data

- Sürekli
- Aralıklı
- Continuous
- Intermittent

**W41-245 245ml/r**

		$\Delta P$ (Mpa)						
		3,5	7	9	12	14	17,5	20
Flow (LPM)	5	122	248	318	401			
	10	129	258	334	426	456	596	
	20	127	256	332	430	454	594	693
	30	124	252	328	426	455	596	695
	40	114	242	322	421	458	602	690
	50	106	234	316	412	451	598	688
	60	96	222	305	403	448	596	678
	70	83	214	290	392	443	582	669
	75	75	206	282	382	438	573	661
	80	70	195	275	370	436	568	650
90	180	258	355	430	552	634		
		348	346	340	325	308	293	

**W41-310 310ml/r**

		$\Delta P$ (Mpa)						
		3,5	7,5	10	13,5	15	17,5	20
Flow (LPM)	5	154	325					
	10	162	343	455	557			
	20	168	350	468	582	629	733	806
	30	166	345	472	581	630	742	823
	40	155	338	463	576	627	738	825
	50	142	326	456	569	623	729	824
	60	121	312	440	556	645	714	813
	70	105	300	426	540	632	704	802
	75	96	289	420	530	624	696	795
	80	84	278	408	519	612	689	785
90	63	258	388	496	593	668	760	
		282	280	275	266	248	234	209

**W41-395 395ml/r**

		$\Delta P$ (Mpa)					
		3,5	6	10,5	12,5	15	19
Flow (LPM)	5	196	349	518			
	10	205	362	545	701	804	
	20	208	365	542	707	812	985
	30	202	356	541	706	806	984
	40	196	345	530	702	802	972
	50	174	332	519	687	796	957
	60	155	320	500	668	792	945
	70	138	305	480	647	790	923
	75	132	295	467	634	788	912
	80	114	278	452	622	772	895
90	92	255	436	596	752	882	
		220	220	215	203	185	166

**W41-500 500ml/r**

		$\Delta P$ (Mpa)					
		2,5	5	8,5	10	12,5	16
Flow (LPM)	5	164	318	517			
	10	178	335	556	669	790	968
	20	178	330	560	672	798	986
	30	173	320	552	661	792	981
	40	162	310	542	654	782	972
	50	146	298	524	635	769	955
	60	122	276	503	615	746	933
	70	98	256	482	598	728	918
	75	80	241	470	583	715	901
	80	62	223	456	572	700	882
90	36	202	422	550	672	870	
		176	175	172	166	160	158

**W41-625 625ml/r**

		$\Delta P$ (Mpa)					
		3,5	5	7	8,5	10,5	14
Flow (LPM)	5	250	380	510	640	755	
	10	260	395	535	670	795	1060
	20	275	425	570	710	850	1065
	30	295	450	605	755	925	1270
	40	297	450	610	765	920	1330
	50	285	445	605	760	915	1325
	60	285	440	595	755	915	1325
	70	280	430	585	745	905	1320
	75	275	415	575	735	895	1315
	80	240	400	560	720	880	1300
90	142	141	139	138	137	131	

**W41-800 800ml/r**

		$\Delta P$ (Mpa)					
		3,5	5	7	8,5	10,5	13
Flow (LPM)	5	420	590	775	958		
	10	420	594	790	972	1176	1407
	20	435	608	840	1020	1204	1428
	30	420	596	830	1005	1204	1412
	40	390	595	796	975	1190	1410
	50	380	545	780	960	1176	
	60	360	525	765	945	1172	
	70	340	515	750	932	1163	
	75	325	510	732	910	1140	
	80	315	475	722	865	1126	
90	106	104	102				

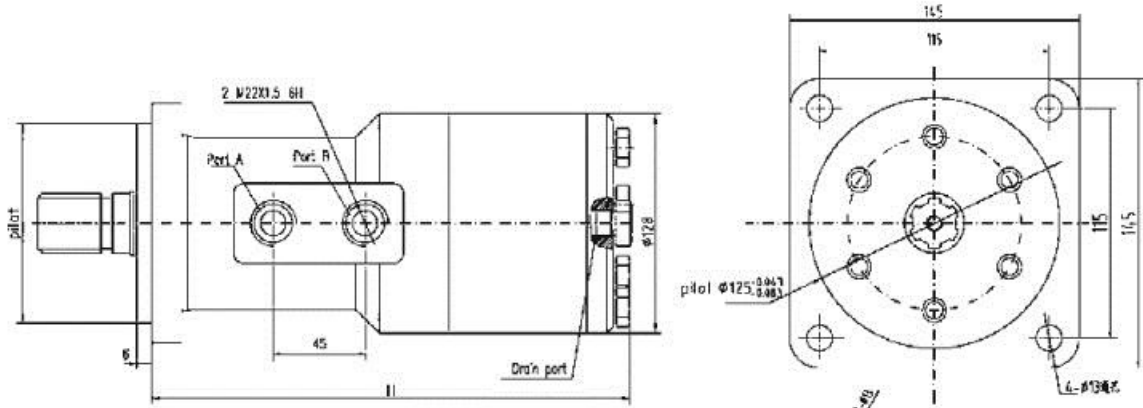
**Not:** Tüm testler hidrolik ya ve 50°C de yapılmıştır. Çalışma şartlarına göre veriler farklılık gösterebilir.

**Note:** All the data are tested at 50°C with N68 anti-wear hydraulic oil. Actual data may vary slightly from unit to unit in production.

## Düşük Hızlı Yüksek Torklu Hidrolik Motorlar, W41 Serisi

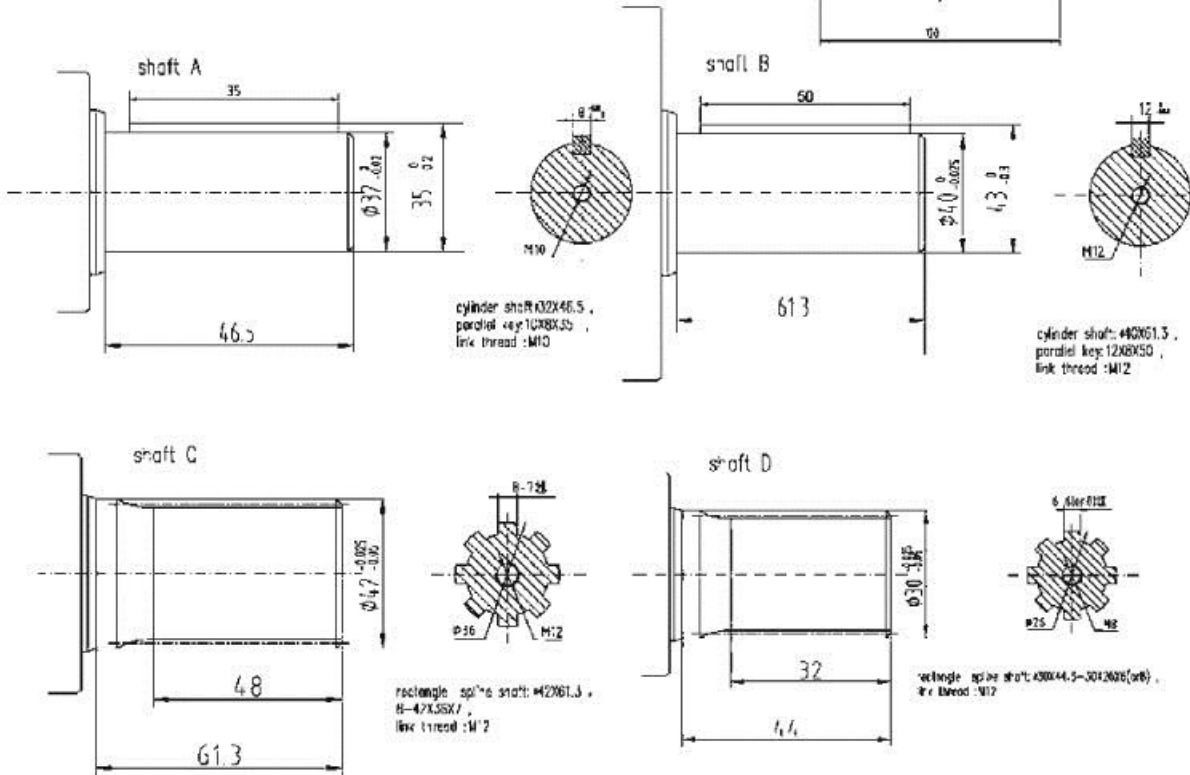
### Low Speed High Torque Hydraulic Motor, W41 Series

#### Ölçü ve Montaj Bilgileri / Dimensions and Mounting Data



Displacement	245	310	390	500	630	850
H	212	219	228	239	2535	2745

**Milinin dönme yönü standart saat yönünde motor ucu bakarak, "A" portu saat yönünde "B" portu saat yönü tersi**  
 Direction of shaft rotation standart when facing shaft end of motor,  
 shaft rotation Clockwise when port "A" is pressurized  
 Counter-clockwise when port "B" is pressurized





## Düşük Hızlı Yüksek Torklu Hidrolik Motorlar, W41 Serisi

### Low Speed High Torque Hydraulic Motor, W41 Series

#### Opsiyonel Ölçüler Kod Numaraları / Code Numbers for Optional Dimensions

Feature	Shaft	Oil Port	Displacement/No.					
			245	310	390	500	630	800
Bolt hole: 4- 13; pilot: 125 Square-flange	8D-42X36X7	M22X1.5, without drain port	41 - 1110	-1111	-1112	-1113	-1114	-1115
	8D-42X36X7	M22X1.5, Drain port M14X1.5,	41 - 1130	-1131	-1132	-1133	-1134	-1135
	8D-42X36X7	M22X1.5, Drain port G1/4,	41 - 1150	-1151	-1152	-1153	-1154	-1155
	Straight shaft 40,key width 12	M22X1.5, without drain port	41 - 0110	-0111	-0112	-0113	-0114	-0115
	Straight shaft 40,key width 12	M22X1.5, Drain port M14X1.5,	41 - 0130	-0131	-0132	-0133	-0134	-0135
	Straight shaft 40,key width 12	M22X1.5, Drain port G1/4,	41 - 0150	-0151	-0152	-0153	-0154	-0155
	Straight shaft 35,key width 10	M22X1.5, Drain port M14X1.5,	41 - 0120	-0121	-0122	-0123	-0124	-0125
Bolt hole: 4- 13; pilot: 125 Square-flange	6D-30X26X6	M22X1.5, without drain port	41 - 1010	-1011	-1012	-1013	-1014	-1015
	6D-30X26X8	M22X1.5, without drain port	41 - 1020	-1021	-1022	-1023	-1024	-1025
	6D-30X26X6	M22X1.5, Drain port M14X1.5,	41 - 1030	-1031	-1032	-1033	-1034	-1035
	6D-30X26X8	M22X1.5, without drain port	41 - 1050	-1051	-1052	-1053	-1054	-1055
	Straight shaft 25,key width 8	M22X1.5, Drain port M14X1.5,	41 - 0050	-0051	-0052	-0053	-0054	-0055
	Straight shaft 25,key width 8	M22X1.5, without drain port	41 - 0060	-0061	-0062	-0063	-0064	-0065
	Straight shaft 30,key width 8	M22X1.5, Drain port M14X1.5,	41 - 0070	-0071	-0072	-0073	-0074	-0075
	Straight shaft 30,key width 8	M22X1.5, without drain port	41 - 0080	-0081	-0082	-0083	-0084	-0085
	6D-30X26X8( Center hole threadM14)	M22X1.5, without drain port	41 - 1090	-1091	-1092	-1093	-1094	-1095